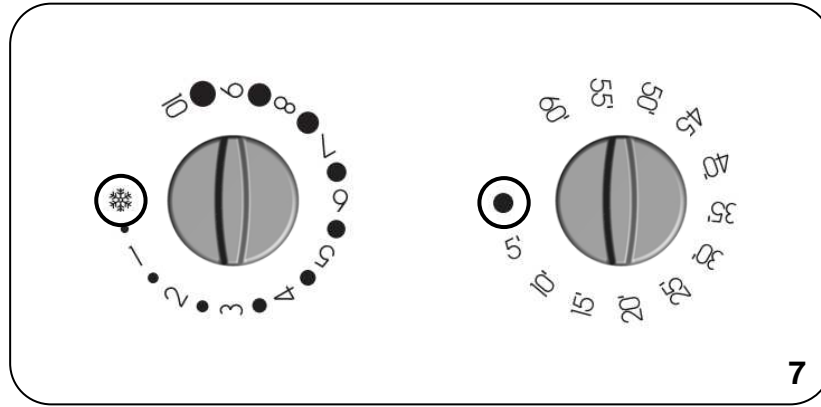
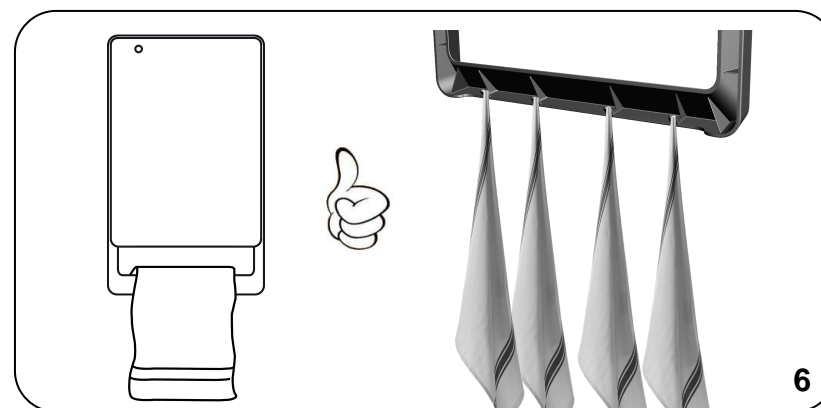
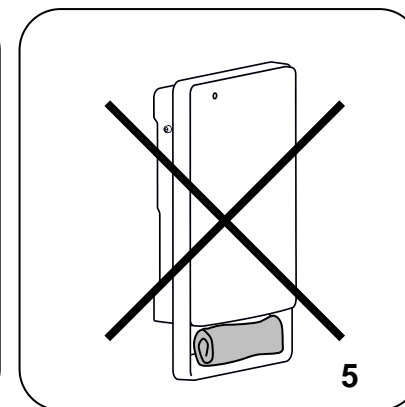
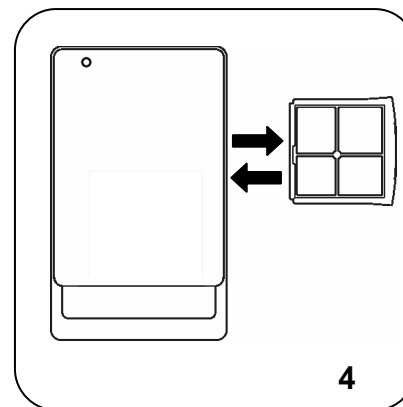
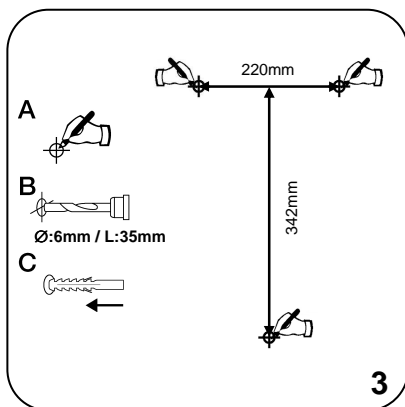
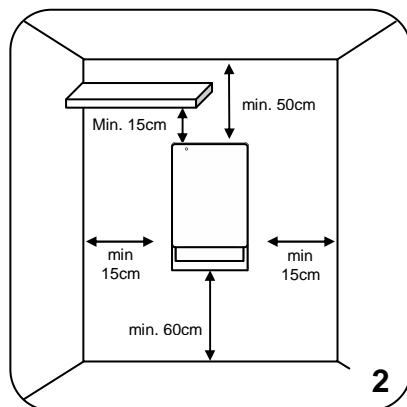
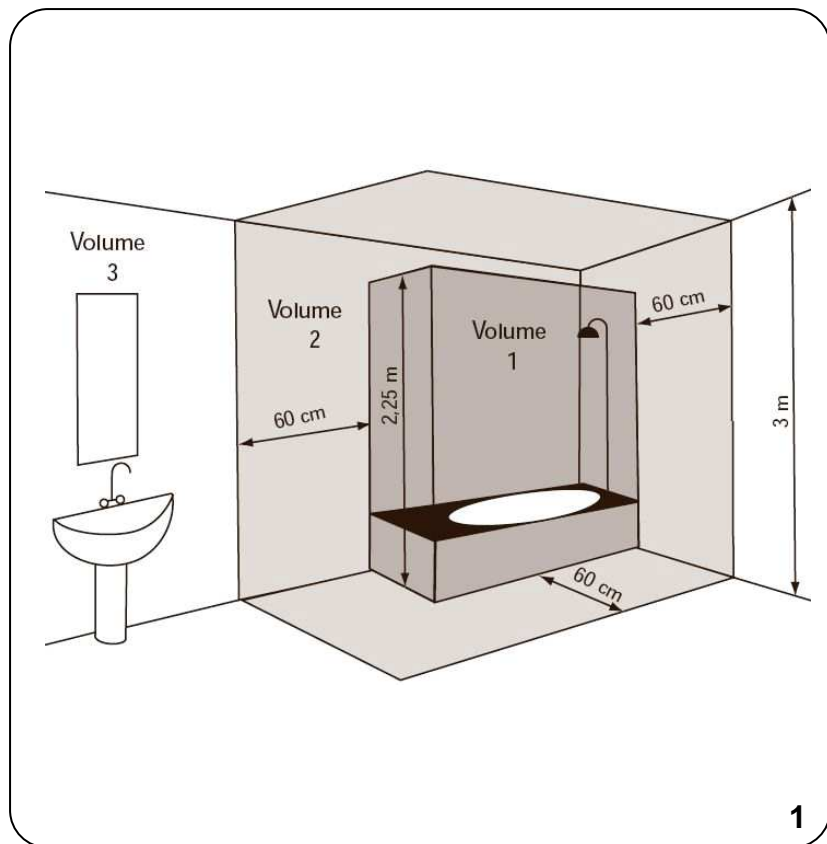


FOLIO

**Please retain this instructions in a safe place
for future reference.**



ENGLISH

INSTALLATION AND OPERATING MANUAL

Before operating the heater, please read these instructions thoroughly to avoid damage and hazardous situations. Any use of this heater other than that stipulated in this instruction manual may cause fire, electric shock or injury, and voids all warranties.

Warranty does not apply to any defect, deterioration, loss, injury or damage caused by, or as a result of, the misuse or abuse of this heater. The rights dictated by State law are not prejudiced. None of the terms of this warranty are to be taken as excluding any conditions or warranties implied by State law, which cannot be excluded or modified.

Before any operation remove the packaging and check product integrity. In case of defects or damages do not try to repair it yourself but contact your dealer.

Do not let children play with the packaging and protect the environment by disposing of the packaging in accordance with the national regulations for waste processing.

Please retain these instructions in a safe place for future reference.

1. For your safety

- ❑ This appliance is intended for normal household use and not for use in commercial/industrial environment, in vehicles or on board ships or aircrafts.
- ❑ This appliance can be used by children aged from 8 years and above and persons with reduced physical, sensory or mental capabilities or lack of experience and knowledge if they have been given supervision or instruction concerning use of the appliance in a safe way and understand the hazards involved. Children shall not play with the appliance. Cleaning and user maintenance shall not be made by children without supervision.
- ❑ Children of less than 3 years should be kept away unless continuously supervised.
- ❑ Children aged from 3 years and less than 8 years shall only switch on/off the appliance provided that it has been placed or installed in its intended normal operating position and they have been given supervision or instruction concerning use of the appliance in a safe way and understand the hazards involved. Children aged from 3 years and less than 8 years shall not plug in, regulate and clean the appliance or perform user maintenance.
- ❑ **CAUTION — Some parts of this product can become very hot and cause burns. Particular attention has to be given where children and vulnerable people are present.**
- ❑ Make sure that your supply rating corresponds to what specified on the rating plate: 230V~, 50Hz.
- ❑ This heater is water resistant to IPX4. It can therefore be used in bathrooms or other areas subject to humidity **AS LONG AS IT IS NOT INSTALLED WITHIN THE PERIMETER OF BATH TUBS OR SHOWERS.** This means that it cannot be installed in the areas marked as VOLUME 1 in picture 1.
- ❑ During function, place the heater in a safe position:
 - at least 1m far from inflammable objects or furnitures;
 - leaving not less than 1m of free space in front of the heater;
 - not located immediately below a socket-outlet.
- ❑ Do not leave animals or children touch or play with the appliance. Pay attention! The air outlet grille gets hot during operation (more than 90°C)
- ❑ **WARNING: In order to avoid overheating, do not cover the heater.** Do not hang anything on the heater and do not cover it while it's working. This is clearly written on the cover of the product or shown by the symbol



- ❑ Do not use the heater in rooms with explosive gas or while using inflammable solvents or varnish or glues.
- ❑ If the cordset is damaged and you have to change it, do not do the job yourselves! Take the product to an after sales authorised repair centre or to a person with similar skill and knowledge, in order to avoid any risk of danger.
- ❑ The appliance must be positioned so that the plug is always accessible.
- ❑ Do not mount the product on walls made of synthetic material.

2. Wall mounting

- ☐ Only fix the heater in vertical position with the air outlet grid downward;
- ☐ This heater is fitted with a double electrical insulation circuit (class II) and therefore does not require an earth connection.
- ☐ It must never be possible for people in the bath tub or shower to reach the adjustment knobs.
- ☐ This heater must be correctly installed in compliance with the regulations in force in the country of installation.
- ☐ In wet spaces like bathrooms or kitchens, the connection terminal must be installed at least 25 cm above the floor. The electrical connection to the power supply must also be fitted with a two-pole switch with a minimum gap between the contacts that allows complete disconnection according to excess voltage III category conditions.
- ☐ Always make observe the minimum distances from walls, furniture and/or objects, as indicated in picture 2. Never install the product so that the distance between the floor and the lower side of the product is less than 600 mm:
 - Drill three 6 mm diameter holes in the wall, as shown in picture 3
 - Insert the three wall plugs supplied with the product
 - Insert the 2 upper screws, contained in the same bag, taking care to leave a distance of 8 mm between the head of the screws and the wall;
 - Gripping the heater firmly, hook it onto the two screws; CAUTION! Before releasing the heater make sure it is attached to the 2 screws.
 - Then secure the product with the lower screw.

3. Filter

- ☐ This product is fitted with a filter to protect the heating element from dust and dirt.
- ☐ The filter is removable to be easily cleaned with water (picture 4).
- ☐ To keep the heater in perfect condition, clean the filter once every six months REMEMBERING TO PUT IT BACK AGAIN AFTERWARDS.

4. Towels

- ☐ The product is equipped with a towel rail and n. 4 additional hooks placed on rail's back side.
- ☐ Please do not push or embed towel close to the air outlet grid (picture 5) but place them as shown in picture 6.

5. Using the fan heater

The heater is fitted with the controls shown in figure 7

Using the thermostat

- ☐ In a room with a temperature in excess of 35°C, the thermostat does not turn on the fan heater even if it is at maximum.
- ☐ Vice-versa, in a room with a very low temperature (below 5°C), the thermostat keeps the heater constantly on, even if it is at minimum.
- ☐ To optimise use of the thermostat, proceed as follows:
 - turn the thermostat knob to maximum and wait until a comfortable temperature is reached;
 - then turn the thermostat knob anti-clockwise until you hear a "click" and the heater turns off;
 - turn the thermostat knob clockwise just a little;
 - in this position, the thermostat will maintain the selected ambient temperature.

Model with thermostat and 60' timer

- ☐ This model of fan heater is fitted with two knobs, one for the 60' timer and the other for the thermostat.
- ☐ 2 different operating modes are available:

A Maintenance of ambient temperature:
Starting from the anti-freeze position "***", turn the thermostat knob clockwise until you hear a "click": the fan heater starts working at 1000W and the indicator LED lights up.

The thermostat maintains the required ambient temperature by automatically turning the heater on and off. The more the knob is turned clockwise to a higher number, the higher the ambient temperature will be. The highest position of the thermostat corresponds to approximately 35°C, the bottom one (*) to about 5°C.

To adjust the thermostat, see the USING THE THERMOSTAT section above.

- B Rapid heating
Adjust the ambient thermostat to the required temperature and then turn the timer knob to select the required operating time. The product rapidly heats the room 1800W for the set time and then reduces power to 1000W to maintain the ambient temperature selected with the thermostat.
- ☐ When the heater is working under timer control at 1800W the thermostat doesn't control the room temperature. In this condition, do not use the heater in small rooms when they are occupied by persons not capable of leaving the room on their own, unless constant supervision is provided by a person responsible for their safety.

6. Troubleshooting

- ☐ In the event of overheating, the safety device on the appliance automatically disabled the heating elements and motor. In this case:
 - Turn off the fan heater and allow it to cool down for about 15/20 minutes.
 - Make sure the dust filter is not totally obstructed and clean if necessary. Remember to put it back again afterwards.
 - Eliminate any other possible reasons for overheating (e.g.: obstructions in front of the air inlet/outlet grilles, build-ups of dirt).
 - Turn on the fan heater again and check it works correctly.

7. Maintenance

- ☐ This product does not require any special maintenance.
- ☐ Clean the product with a dry cloth once every 6 months.
- ☐ If the product requires repairing, contact an authorised technical service centre.
- ☐ When replacing the power cable, use a 2x1,00mm² H05VV-F HAR type. This operation must be performed by qualified personnel and never by the end user in order to avoid damaging the appliance and jeopardising personal safety.

8. Legal notice



Environment and recycling

Please help us to protect the environment by disposing of the packaging in accordance with the national regulations for waste processing.

Recycling of obsolete appliances

Appliances with this label must not be disposed off with the general waste. They must be collected separately and disposed off according to local regulations.